

Q: I was at a live show recently when 3/4 the way through, I noticed a lot of people packing up rather noisily and leaving and the champs hadn't been named yet. Isn't this bad show manners? I thought it was the end of the show. The whole thing was quite disrupting and distracting to the rest of the showers.

A: Sometimes the length of the show necessitates an early quitting time for a LOT of show attendees, especially if their classes are over and they are not expecting a champ or reserve. You are right about the noise level though...when I'm on my way out early, I pack quietly and pay attention to what is being announced and despite being busy packing, try to keep an ear open for how the rest of my friends are doing. I've been at shows where I decided to quit the judge due to them not caring for my horses in the least, but this does not mean the rest of the show is over. Sometimes we often drive back home on the same night and the earlier I get a head start on the highway the better. But ALWAYS thank the show holder and ask if there's anything necessary to be done before you leave. ALWAYS leave quietly. Be sure and tell SOMONE you're leaving so they can re-adjust door prize calls(if any) and you don't leave a confused show staff hollering in the bathroom for you!

Q: What happens if a model is accidentally knocked off the show table by a judge and broken? Are the judges liable? or the showholder?

A: Whew!!! This is a toughy...Actually, you are entirely responsible for what you dare to bring and display at any show. Most show packets include the reminder that they are not liable and advise you to carefully display your fragile collection. If you can't bear to lose it, or it's so irreplaceable, don't bring it.

Q: What models are considered the Breyer "Artist Series?"

A: These are the models Breyer had especially commissioned by certain well-known artists such as Rich Rudish or Rowland Cheney, just to list examples...

Do you have a question for Lori?? Good Question!! Why don't you drop her a line (and a SASE if you'd like a personal reply other than the magazine run of your question). Lori Daniels at Crazyhorse Studios/Back of the Moon, 3720 Friars Cove Road, St. Cloud, Florida 34722. -ED

DECK THE HALLS...

by Juanita Lewison-Snyder

Deck the halls with johns & mollies
fa-la-la-la-la-la-la-la
Grab those Capwells, Francis, & Jollys
fa-la-la-la-la-la-la-la
There's a Behning, fight you for it
fa-la-la-la-la-la-la-la
Ew, a Rock-Smith, I'm euphoric
fa-la-la-la-la-la-la-la

Santa's bringing me a Kathman
fa-la-la-la-la-la-la-la
A HR mini painted like Bueno San
fa-la-la-la-la-la-la-la
Trade you 2 Brents for a Rivera
fa-la-la-la-la-la-la-la
Or my Maestas for a Williams
fa-la-la-la-la-la-la-la

Deck the halls with johns & mollies
fa-la-la-la-la-la-la-la
And resins by Belisle & Donnelly
fa-la-la-la-la-la-la-la
I'd kill for one by Lori Daniels
fa-la-la-la-la-la-la-la
With gaming tack by Flat Creek Stables
fa-la-la-la-la-la-la-la

Love those Beswicks, HR's, Crowleys.
fa-la-la-la-la-la-la-la
Border Fine Arts, Animal Artistry
fa-la-la-la-la-la-la-la
Lefton, Northlight, Breyers no doubt
fa-la-la-la-la-la-la-la
& Hartlands if they ever come out
fa-la-la-la-la-la-la-la

No one's donks are cuter than Posey's
fa-la-la-la-la-la-la-la
Not even BHR Repaint Onlys
fa-la-la-la-la-la-la-la
If you think this song aint clever
fa-la-la-la-la-la-la-la
Like to see you do it better
fa-la-la-la-la-la-la-la

MERRY CHRISTMAS MHG READERS!!

Did you know?

By Juanita Snyder

St. Nicholas (alias Santa Claus) was originally a 4th Century AD patron saint of Russia.

What isn't as well known is that he was also considered a benefactor of the burro.

So the story goes, among his many good deeds St. Nicholas had supposedly come to the rescue of 2 burros whose heads had been wickedly sliced off. Taking pity on the animals, he sewed on their heads again.

Over the centuries, Saint Nick had become part of the Christmas celebration in the Netherlands, Belgium, America, and several other European countries, and was said to make his gift-giving journey astride either a white horse or a white burro. The reindeer thing was an American innovation.

**BREYER CWP RRH'D TO PINTO ZONY
(ZEBRA X PONY)**

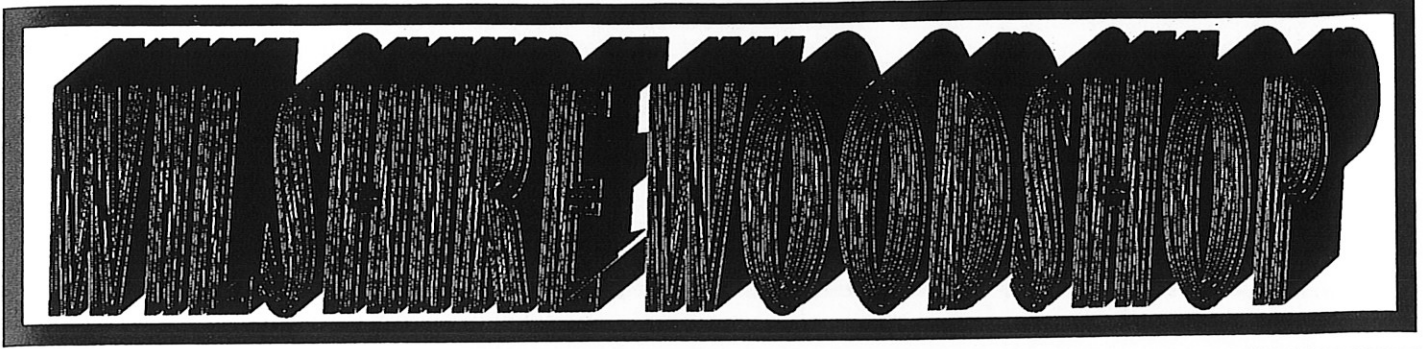


SPOTTY MULE FACTORY
FOR THIS ONE AND MORE
FOR SALE.

SEE CLASSIFIED!

COMING
IN THE
NEXT
ISSUE OF
THE
MODEL
HORSE
GAZETTE:
SPANISH BREEDS
&
THE COLLECTING
ASPECT OF MODEL
HORSES!

WE NEED PHOTOS OF ANY BREED OF SPANISH INFLUENCE AND THE MOST PRIZED MODELS IN YOUR COLLECTION! WHAT GOT YOU STARTED IN COLLECTING? WHAT MAKES YOU STAY? WHAT'S YOUR FAVORITE MODEL? HOW MANY MODELS IN YOUR COLLECTION? SEND IN YOUR BEST HOBBY STORIES TO COMPETE FOR A ONE YEAR EXTENSION TO YOUR SUBSCRIPTION OR A FULL PAGE AD IN THE NEXT ISSUE OF THE GAZETTE!



By Linda & Bob Sturhann

Nothing adds color and spark to your live and photo set-ups like flowers. Pots, urns, tubs and planter walls filled with rich, green foliage and bright flowers add just the right touch of color without getting a cluttered look. This article will discuss some of the methods of making simple flower boxes and planter walls. Next issue, we'll check out methods to make wood turnings look like urns and pots.

MAKING A PLANTER WALL FOR A WING JUMP

Materials: 1 Piece of Pine Lattice*
28" Long
1 Scrap of Pine Parting Strip*
4" Long
Wood Glue or 527 Cement
(Wood Glue preferable)

**Both types of wood can be found in a lumber yard, but you can use any type of wood that is the same size and thickness.*

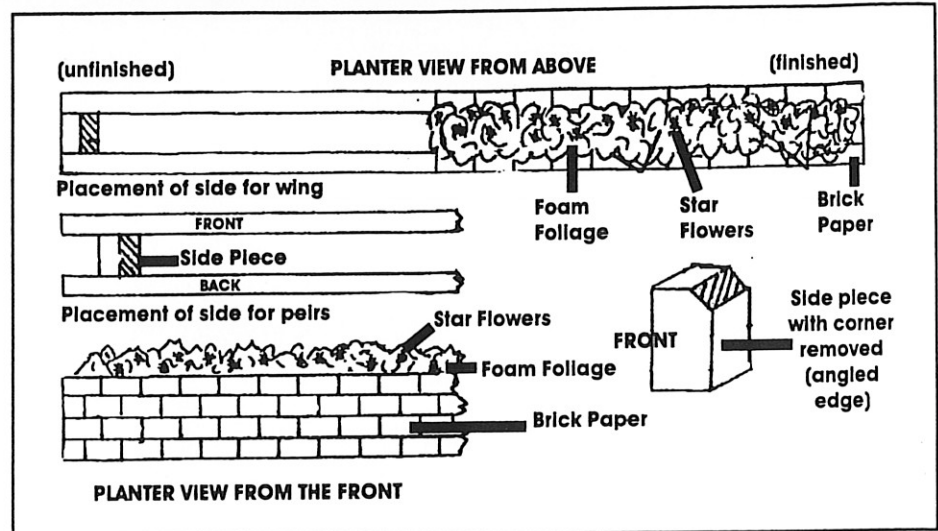
Tools: Small Saw
Ruler & Pencil
Sandpaper - medium & fine grit
Coarse Rasp
C Clamps

1. Cut lattice into two 14 inch lengths. Sand off any feathering along cut and remove any splinters with medium grit sandpaper and finish with fine grit. This will become the front and back of the planter wall.

2. Cut the parting strip into two pieces two inches long. Remove feathering and splinters (see step one).

3. On the parting strips, saw or rasp off the top inner edges (see illustration). Sand until fairly smooth. The diagonal cut on the inner sides of the parting strips are not absolutely necessary, but will make it easier to fill the planter with foliage later.

4. Lie one piece of lattice face down on your work area. Apply glue to the backs



of both parting strips. Press them onto the back of the lattice strip with the diagonal cuts to the inside. Apply glue to the front of the PARTING strips and place the second piece of lattice on top (Check illustration for construction).

5. While the glue is still wet, gently stand the entire planter up. Adjust the placement of the sides, front, and back so there are no gaps or pieces of wood jutting out. All joints should be smooth without any ridges. When all the edges line up, use the C clamps to gently hold the planter together to dry over night.

6. When glue is dry, remove the clamps. Wrap a piece of sandpaper over a block of wood and sand the ends and top of the planter where the pieces of wood meet to insure a smooth joint. Your planter wall is ready to finish.

This basic design is quite useful. If you scale the item down and use thin basswood, you can make small window boxes that stand in front of a jump or around a backing chute trail prop. If you would like to make this jump for a pillar jump such as a Grand Prix Puisseance Wall or a Wishing Well, cut the lattice one inch longer and move the side pieces toward the center of the planter by half an inch on each side so the uprights that hold the poles will slip into the spaces. This will give a nice,

finished look to your pillar jump set.

DECORATING YOUR PLANTER WALL

The simplest way to finish your wall is to stain it with wood stain or to paint it white (See **Wilshire Woodshop**, *The Model Horse Gazette*, Vol. No.) to add interest and texture to the planter, you can make it look like it is constructed from boards. To etch boards on the lattice, it is best to do this step BEFORE you assemble your planter.

You will need: A scribing tool or a ball point pen that has run out of ink, a pencil with soft lead, and a metal ruler. You can scribe boards that run horizontally like a window box or vertically like a picket fence.

For the Picket Fence look:

1. Starting at the end of the lattice, make tiny pencil marks across the top every half inch. When the marks stretch across the entire piece of lattice, turn the ruler over and make pencil marks every half inch along the bottom. Connect the top mark and the mark directly below it with a light pencil line.

2. Be sure the piece of lattice is on a firm, flat surface that cannot be scratched (For a wooden table top, put down at least a half inch thick pile of newspaper to protect the surface).

3. Place the metal ruler along the pencil line. Be sure the ruler is situated between you and the line.

4. Press the scribing tool into the edge of the wood at the top of the pencil line. While pressing down on the wood and against the ruler, pull the scribe along the pencil line. It should take enough wood that the pencil line is gone. If not, move the ruler a hair away from you and pull the scribe along the same line making it a tiny bit wider.

5. Continue along the lattice until all the pencil marks have been replaced with a straight, scribed line.

FOR HORIZONTAL BOARDS:

1. Two horizontal boards will fit on the lattice the best. At the end of the lattice, find the center and mark it with a soft pencil. Continue marking the center of the lattice every inch or so.

2. When you have marked the center for the entire length of the board, lie the metal ruler over the marks and connect them with a straight pencil mark.

3. Read over the instructions above for use of the ruler and scribe. Scribe along line over the pencil mark to divide the lattice in half horizontally, giving the look of two boards.

4. For a more realistic look, scribe off set vertical lines every three inches in the upper and lower boards. For example, if you start with the first vertical mark in the upper board at three inches, start the first vertical mark in the lower board at one and a half inches (for more help, see illustrations provided).

If you're looking for something a bit different that's still easy to do, check out dollhouse wallpaper. It comes in brick, stone, patriotic themes, and more. It's easy to apply and doesn't take a lot of time.

You will need: One sheet of dollhouse wallpaper, sharp scissors, Elmer's™ Glue, a stiff brush, Mod Podge™, a soft brush, and sharp embroidery or surgical scissors - the finer, the better.

1. Paint only the ends of the planter wall to match the main color of the wallpaper you have chosen. Let paint completely dry.

2. Cut two pieces of wallpaper that are about one inch larger than the lattice in both directions. When you glue it to the lattice, leave approximately one half inch of paper beyond the top, bottom and sides of the planter. If the paper has a

If the paper has a horizontal line, such as bricks, make a sharp crease in the paper along one of the lines about half an inch from the top. This will help you get the paper on the planter straight.

3. Spread Elmer's™ Glue on the face of the lattice with the stiff brush. You don't want great gobs of glue, just enough to make the paper stick. If you use too much glue, it will make the paper too wet and it will pucker.

4. Place the paper over the glue. If you have made a crease in the top, make sure it is pushed down over the top of the planter. Use your hands to gently smooth the paper and to push any excess glue from the bottom of the planter. Turn the planter over and apply the paper in the same way. Let the glue dry.

5. When the glue has dried, cut the excess paper from the sides and the bottom of the planter only. Do not cut the paper off the top. Use your sharp scissors and cut as close to the bottom and side edges as possible. I have found that I get the best results when I cut from the wrong side of the paper (it has to do with the placement of the scissor blades in relation to the wood). If you nick a painted portion of wood, touch it up later. You are now ready to work on the top of the planter.

6. If you did not fold the paper in step 2, fold both pieces now. Then fold one back up out of the way. Note how the paper falls across the end piece where you filed it down on the diagonal. To make the paper lie flat, you have to cut it. Make the first cut perpendicular to the lattice where the diagonal piece starts. Then carefully make a cut parallel to the back of the lattice as close as you can until you reach the spot where the side piece is even with the top of the planter. Make the same cut at the other end of the planter.

7. Apply Elmer's™ Glue to the entire half inch of extra paper and fold it over the top edge of the planter. Press the paper along the top edge first, then press the cut flap onto the diagonal piece, and then press the rest of the paper onto the back side of the lattice. Following the above steps on the other side of the planter. Let all the glue dry.

8. If you don't want to fold the paper over the top of the planter as described in steps 6 and 7, you can paint the ends and the top of the planter and just cut off the excess on top the same way you cut it off the bottom. It takes a bit less time and has a different look, but it still makes a handsome planter.

WHAT'S A PLANTER WITHOUT PLANTS??

Since the main reason for a planter wall is to hold plants, here's an easy way to realistically simulate the types of shrubs and plants that you see in real planters on the jump course.

You will need: foam foliage (preferable Woodlands Scenics™ brand), hot glue gun (optional), Bond's 527™ Cement, star flowers (optional), tweezers (for handling flowers) and sharp embroidery scissors (for flowers).

Let's look at the different types of foliage before we get started. When Bob and I first built our props, we used colored lichen, however, we found it got dry and rather crisp. Not only did it lose its color, but it crumbled as well. We chose Woodlands Scenics™ products over Real-Life™ because of the difference in color. Real-Life™ products are bright, unnatural colors. Woodlands Scenics™ foam is much more muted, more true to natural colors.

Star flowers can be found in craft stores in bundles, frequently with more than one color per bundle. They're the tiny flowers which are on long, straw stems. Don't confuse them with straw flowers which are much too large and available only in the fall. When picking star flowers, try not to pick bunches that have blossoms that are completely open like a small daisy. The half-opened flowers are much stronger and much more realistic. I have bunches of star flowers in pink and red that look like tiny roses. No bunch will have all half closed flowers, but some have a lot more than others. Another factor to consider while choosing flowers is color. Star flowers are spray painted and come in all colors, all shades. Spring will have more pastels, and fall darker colors, etc. Pick muted, neutral colors to be most realistic. Now that you have the flowers, let's attach them to your planter.

1. Take the block of foam foliage out of the plastic bag and lie it on your work area in one block. Tear off (NEVER CUT!) a strip of foliage from the bottom of the block that is about one and one half inches wide. If the tear is uneven, don't worry, it will add to the overall effect.

2. Now you should have a strip that is ragged on the top and square on all the other sides. Those square sides and ends don't look very real, so using your finger nails or tweezers, pull out the bits of foam to give the sides the same ragged look that the top has. Tear off a second and third block and prepare them exactly as you did the first one.

3. Next, fit the blocks of foliage into the planter. If the blocks break apart from handling, it doesn't matter. Once they're glued into the planter, the breaks won't show. The foliage should go about half an inch down the inside of the lattice. Once a piece is in the planter, slide it down toward the end to make the foliage more dense.

4. When the planter is filled evenly, take the foliage out and lie it on your work surface behind the planter. Using the hot glue gun or the 527™ Cement, spread a line of glue across the diagonal on the side piece on the left side and about one third of the way across the inside of the planter on both sides. Pick up the first piece of foliage and push it into the glue and slide it immediately to the left. If you are using hot glue, be careful not to get it on your fingers. Working to the right, continue gluing the foliage and sliding it to the left until the 527™ cement will run down the sides and out the bottom. Be sure to work over newspapers.

5. Look at the planter. If there are really thin spots in the foliage or places where the foliage slipped low into the planter, tear off pieces from the foliage block and glue them into the bare spots with the hot glue or 527™. Be sure to make all sides look ragged. Resist the urge to make the level of the foliage look too even. Real plants grow into all different shapes and heights.

6. If you are going to use star flowers, there are several tricks that make handling the flowers and glue easier. First, stand the tube of 527™ cement in an old drinking glass. With the tube in the upright position, the cement is less likely to ooze out. Second, tie your bunch of flowers with string as tightly as possible. Lie the bunch on the table where it is handy, but where the glue can't drip on them.

7. Select a flower from the bunch and pull it out completely. Hold the flower gently by the petals on one side either between your thumb and index finger nail or with the tweezers. Snip the long stem off as close to the flower as possible. Gently squeeze the tube of cement so a little drop appears at the neck. Push the back of the flower into the glue and place it on the foliage. I have found that the flowers sit better if they are in the depressions in the foliage rather than sitting on the points.

8. Continue trimming and gluing the flowers along the foliage until it looks

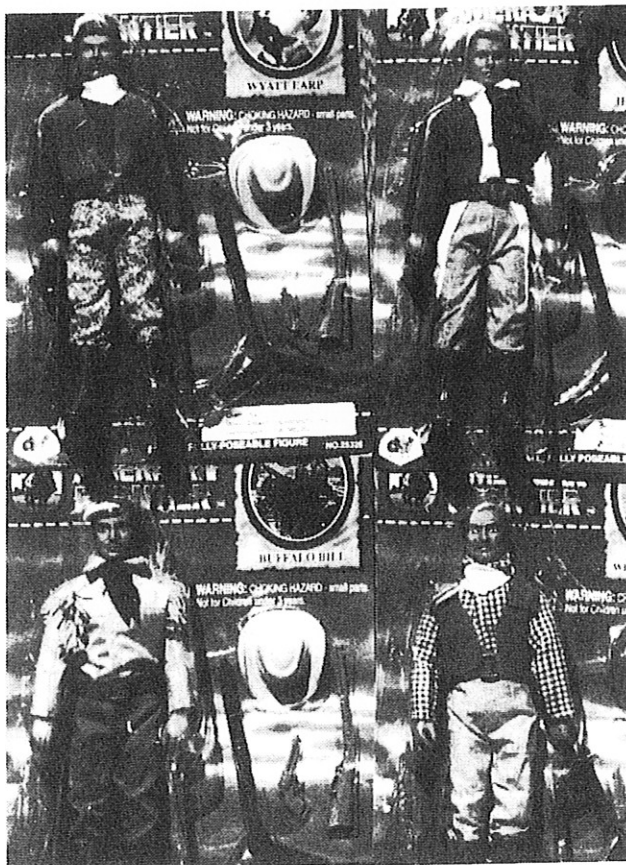


SNOHOMISH RIBBONS & AWARDS

**We specialize in award ribbons
for model horse shows!**

**Write for our sample packet
Send a double stamped self addressed
envelope and \$1.00 and receive 20
color swatches, ten horse logo samples
plus 3 styles/sizes of flat ribbons**

**SNOHOMISH RIBBON COMPANY
8620 139TH. AVE. SE
SNOHOMISH, WA. 98290
1-360-568-4017
FAX 1-360-568-8823**



**8"
POSEABLE
DOLLS,
FOR SALE
FROM
THE
SPOTTY
MULE
FACTORY,
SEE
CLASSIFIEDS.**

**NEW IN
PACKAGE
WITH
WEAPONS
\$13
EACH.**

Wilshire Woodshop Continued . . .

right. I know that sounds vague, but what you feel is too much may be too few for someone else and vice versa. One thing I try to do is to keep the flowers visible on one side of the planter only. That way, you can use the two sides of the planter to give different effects in your photos or live show set-ups. Let all the glue dry completely before you transport your planter. Otherwise, it's ready to use.

Next issue, we'll discuss finishing and decorating those cute flower urns and tubs that you see in jumper, driving, and trail competitions.

If you have any questions or suggestions for a column, or information and prices on purchasing this obstacle completed and ready to show, please send a SASE to Linda Sturhann, c/o Wilshire Miniatures, RR1 Box B7, Mount Upton, NY 13809 or you can contact Linda by phone at (607) 764-8218 (no collect calls, this is Eastern Standard time, no late or early calls for courtesy), or by fax (607) 764-8219. -Ed. 🐾

LONG EARS CONT . . .

WESTERN MULE
MAGAZINE
1780 West Elm
Lebanon, MO 65536
\$15 year/ USA
Monthly

MINIATURE
DONKEY TALK
1338 Hughes Shop Road
Westminster, MD 21158
\$25 year/USA
\$4 sample copy
Bimonthly

DONKEY & MULE NEWS
(official CDMA publication)
RR 1
Priceville, Ontario
Canada NOC-1KO
\$20 year/Canada
\$25 year/USA & Foreign

DONKEY DIGEST
(official DSA publication)
Lot 8 Old Gypmie Road
Mooloolah Queensland
Australia 4553
\$20 year/surface mail
\$25 year/airmail
Quarterly

Happy Shopping!
Happy Reading! 🐾



Autumn Classic Lite 1995

November 4, 1995
Mountain View, CA

One-day, all halter. Plastic/ China-Resin/
Customized Divisions. Flats and Rosettes.

Send SASE to:
Gail Berg
PO Box 390010
Mountain View, CA 94039-0010

Entry deadline 10/28/95
NAMHSA membership pending

ATTENTION MEGO FANS!!!! AUTOGRAPHED PHOTO PRINTS OF MEGO

These 8 x 10 color photo print reproductions* of the centerfold photo pictured in the May/June 1995 issue of Just About Horses are autographed by George Taylor. They come with a personal invitation from George to visit Mego here in Texas & have your Mego models signed. (Note: The offer to sign models is only available to visitors who appear in person at George's Ranch.) Cost of the photo print is \$10.00 plus \$1.00 shipping and handling.

* These are not photographs; they are photo print copies.

ALSO AVAILABLE: THE MEGO PURSE

Special edition Oakleaf & acorn saddle purse authorized by George Taylor. A tooled miniature saddle with real tree forms the purse cover. Trimmed with silver. Handle is a split-ear headstall. A unique edition to wardrobe or Breyer collection. Only \$750 plus \$20 shipping, handling, & insurance. Due to the special nature of this item, no returns of the purse, other than replacement of damaged goods, will be accepted.

Send Orders to:
The Unicorn Woman Melody Snow PO Box 595 Lillian, TX 76061-0595

*** FOR SALE *** FOR SALE *** FOR SALE *** FOR SALE *** FOR SALE *** FOR SALE

Postage is not included in price; please add \$5 for first model, \$3 for each additional model. Inspection pix of most models for a SASE. All models must go, reasonable offers considered.

Michelle Miller, 8050 Oakview Ridge NE, Rockford MI 49341

The Informer: Lady Phase reposed slightly, finished to a lovely bay overo Paint gelding by Candy Maynard & Michelle Belisle. Champion; \$180.

CM Sunny Scoots: CWP R/H by Candy Maynard to a tobiano buckskin Paint Pony gelding. Super shower, one of my favorites -- hate to sell! Pix by Carol Gerhard in halter and English Perf. Grand Champion; price reduced to \$85.

Phoenicia: 7" Hartland Arab CM by Judy Rene Pope to a dark grey Arab mare. Gorgeous grey, featured on cover of the Equine Miniaturist. \$80 reduced.

Regal Recognition: LB Morgan RRH by Terri Glaser to a beautiful golden chestnut Morgan gelding. \$30 reduced.

Animated: PAM CM by Dana Pace to a tobiano bay part Arabian mare trotting on base. Sadly no longer LSQ but still nice. Champion, \$40.

Misty: Classic Kelso R/H to a grey TB mare by Mair Dodd. Nice, \$10.

SJ Bryant: Haflinger RR by Jeanine Hartrampf to a chestnut Haflinger gelding. Super guy, \$125.

SJ Silk N Ambers: QH Yearling CM by Jeanine Hartrampf to a young, walking buckskin tobiano Paint mare. Sharp! \$200.

OF MODELS: All in good condition unless stated otherwise.

Gold Charm Secretariat signed by Pete Stone; \$50.

JAH chestnut Trakehner, \$80.

Breezin' Dixie, \$40.

Wing Commander (seal bay ASB), \$18.

9" Hartland ASB red roan; pretty, with pix; \$30.

Cips Paso Fino, \$40.

PAS, SR bay; \$25.

PAF, bay semi gloss; \$20.

Lady Phase, dapple grey with black points; \$75.

Adios, SR dapple grey; \$25.

Classic Swaps, chestnut; \$20.

Adios, SR palomino; \$35.

Raven (black ASB weanling) with certificate, \$50.

Indian Pony, #174 bay App; \$30.

JAH palomino pinto ASB; small mark on barrel, \$100.

Hartland bay Appaloosa foal, \$20. Bay Arab foal, \$20.

~~Hartland Lady Jewell & Jade in dapple grey and black. Good for RR, \$25/both.~~

CWP Tara in box, \$16.

Black Classic Swaps (Hawk) in box, \$15.

Tesoro in box, \$16.

Charcoal FAM (from '70s), fair condition. Best offer.

MISCELLANEOUS:

- 1) Western Saddle by Lee Francis, tan w/suede seat and carving. Comes with saddle pad, double cinch and connector; Good condition, \$20.
- 2) English saddle by unknown maker. Tan, nice; \$5.
- 3) Mailbox for trail class; white, \$2.
- 4) Grab bag of various rails for jumps, \$2.
- 5) ~~Calves, two Trad size by Lee Francis. Good for roping/cutting, \$10/both.~~
- 6) Stable blankets, Trad size; \$1/both.
- 7) Trail obstacle, ladder type; red, \$4.
- 8) Brenda Breyer with English and Western outfits; \$15.
- 9) Tipping bridge trail obstacle by Lee Francis, \$4.
- 10) Grab bag of various halters and bridles, \$5.
- 11) Fancy Western bridle with Rio Rondo bit; dark brown, \$5.
- 12) English saddle, dark brown; good condition, \$5.

Hallie Ho Farm

Authorized Breyer Dealer



Julie Wilkowski 1845 NW Michelbook Lane McMinnville, OR 97128-2419

phone: (503) 472-8853 / e-mail: hallieho@pnn.com

Any item in the current catalog may be ordered. Please inquire about those not listed.

** COMING IN 1996 - The New Breyer MULE and FJORD!! **

Traditional Series

# 494 Llanarth	\$18.00
# 495 Gem Twist	\$18.00
# 496 Aristocrat	\$16.00
# 497 Ideal QH	\$17.00
# 888 Freckle Doll	\$15.00
# 892 Tara	\$15.00
# 897 Ponokah-E.	\$19.00
# 910 Cisco	\$18.00
# 911 Clayton	\$18.00
# 912 Hanover	\$18.00
# 913 High Flyer	\$19.00
# 914 Tobe	\$17.50
# 915 Kentuckiana	\$15.50
# 916 Mr. Mister	\$17.00
# 917 Oxydol	\$16.00
# 918 Promenade	\$17.50
# 919 Donovan	\$19.00
# 921 Native Diver	\$15.50
# 922 Cody	\$16.50
# 923 Hickok	\$16.50
# 924 Majesty	\$17.50
# 926 Sgt. Pepper	\$15.50
# 927 Thunder Bay	\$15.00
# 928 Lone Star	\$19.00
# 929 Cheyenne	\$17.50
# 932 Dakota	\$14.50
# 933 Sundown	\$17.50
# 934 Cricket	\$11.50
# 935 McDuff	\$19.50
# 937 Calypso	\$15.00
# 938 Shane	\$17.50

Stablemates.

All S/Ms are \$2.25 each

The "B" Ranch

# 263 Black Jack	\$13.00
# 264 Apache	\$13.00
# 265 Spice	\$13.00
# 266 Cloud	\$13.00
# 267 Azul	\$13.00
# 268 Patches	\$13.00
# 269 Carrier	\$39.00
# 286 Neck Rosettes	\$ 2.50
#2003 Glory Gift Set	\$16.00
#2004 Buck Gift Set	\$31.50

The Saddle Club Series

#1016 Starlight/Carole	\$11.25
#1017 Topside/Stevie	\$11.25
#1018 Pepper/Lisa	\$11.25
#1019 Spot/Kate	\$11.25
#1021 Belle	\$7.50
#1022 Prancer	\$7.50
#1023 Moonglow	\$7.50
#1024 Delilah	\$7.50
#1025 Cobalt/Veronica	\$11.25
#5650 SM set	\$10.50

Fine Doreelain

#79195 Premier Arab Mare
in Costume \$135

The Messenger Series

# 480 Mesteno	\$15
#4810 The Dawning	\$22
#4811 The Challenger	\$26
#4812 The Progeny	\$26

Accessories

Any accessory in the current catalog may be ordered.

Gift Sets

#3057 Bedouin Family	\$26
#3349 Appy Mustangs	\$26

Other Animals

#321 Brandy	\$16.50
#322 Pug (Boxer)	\$16.50
#321 Honey (Collie)	\$16.50
#376 Brighty 1991	\$15.00

TO ORDER: Make Payment payable to:

JULIE WILKOWSKI
Orders paid by MO will be sent ASAP, those paid by check will be held about 10 days.

SHIPPING: \$4 for the 1st model. \$1 each additional. Orders shipped by UPS unless otherwise instructed. If sent by P.O., add \$1 for insurance.

Orders will be shipped when all items are available. Split shipments, when requested, will require additional shipping fees.

REFUNDS will be given for merchandise price only. Return instructions will be sent with order.

SASE with correspondence.
PLEASE!!



Classifieds



FOR SALE:

Breyer Canterng Welsh remade to a live show quality Pinto Zony (Zebra x pony) see photo ad on page 26, wool mane and tail, metal shoes, head lengthened, ears redone, details carved, mare or molly. \$95 postage paid; Paso Fino remade to smutty palomino Pinto Molly gaited mule, \$145 postage paid; Running Stallion remade to kicking bronco mule, \$145 postage paid; repainted haired spotty Brighty Donkey, carved details, \$75 postage paid; EQ team model remade walking western pleasure Mule, \$125 pp; **Diane Capwell, 40389 HWY 41 #95, Oakhurst, CA 93644.**

8" fully poseable doss, comparable to Mego™, new in package with all clothes and weapons; Jesse James, Wild Bill Hickock, Buffalo Bill, Wyatt Earp, \$13 each postage paid, two for \$24, three for \$34, all four for \$45. Will trade for RRH prospects, send lists. See photo of dolls on page 25. **Diane Capwell, 40389 Hwy 41 #95, Oakhurst, CA 93644.**

For Sale: Black Keen \$12, Hobo \$30, Double Take \$25, Guinevere \$21, Lady Roxanna \$25, Iciclay \$30. All mint. Send for Saleslist. Few other OF's and SR's. Many RRH'ed models under \$50. SASE to **Jamie Coughlin, 1525 Britton Road, Lynn haven, FL 32444-3311. (904) 265-8346.** I'm looking for TekWar series episodes, photos, etc. Can anyone help? I'm at greerm!@mail.firn.edu

For Sale: Zebra - RR by Kulwicki live placed. \$75 cash \$95 terms/trades. I have all my Breyers for sale, all Discontinued, Limited Edition, or Special Run. Very reasonable, plus Beswicks, NL, LSQ customs. I trade for chinas, resins, customs. SASE to **Jamie Coughlin, 1525 Britton Road, Lynn haven, FL 32444-3311. (904) 265-8346.** I'm looking for TekWar series episodes, photos, etc. Can anyone help? I'm at greerm!@mail.firn.edu

FOR SALE: Clearing out left over OF's! Turbo, beautiful shading, mint, factory mark under pant on one shoulder, \$125; JAH Steel Dust, MIB with certificate, \$90; LB Charger, SR Dapple Grey Shire from Hobby Center Toys, large black mark from factory on one leg, otherwise good condition, \$30; Sears SR Running Family, Blood Bay Black Beauty, Running Mare and

running foal, 3 condition, \$125 for all three! BreyerFest '95 Mego, MIB, signed by Peter Stone, \$90; Flocked Clydesdale Mare, good condition, w/white leather halter, SR as a gelding, \$85; all models postage paid! **Dawn Marie Calo, 7086 Ashlawn Drive, Brecksville, Ohio 44141.**

CLUBS:

Do you photo show your models? Do you hate keeping track of points? Do you like to show several different breeds? Do you like to have lots of photo shows to enter? If you do, then the Tejas Model Horse Association is for you! TMHA is open to anyone interested in photo showing (not just people in Texas). We have a bimonthly newsletter, a judges & exhibitors guidebook, and we also offer model racing! If you would like to know more, please send a LSASE with 2 first class stamps to: **Daralyn Wallace, 9635 Elmo Weedon Road, Bryan, TX 77808.**

Want to SAVE TIME and MONEY? Try Show Trains! The National Equine Miniature Exhibitors' Association is one of only a few clubs that uses a show train format for its monthly photo show and it really works! We have excellent member participation in our competitive shows, and NEMEA's approach makes it easy to stay active! LSASE for info! **Katie Carter, 100 Oak Street, Auburn, AL 36830.**

SERVICES:

Do you have this really cool custom idea? Do you have some of those neat unpainted resin horses? Need a quality artist that has a reputation for live show championships and international acclaim? I am pleased to be offering custom painting to the model horse fancy as my only profession. This enables me to complete orders within two weeks guaranteed, without sacrifice to quality! I have a list of references that will tell you that they are incredibly happy and surprised at the quality of my work and the turn around time. Please feel free to contact me, photos and references gladly furnished! **Thomas Bainbridge/Box 73/Kohler, WI 53044. phone 414.467.3094.** See my display ad on page 2 of this issue.

MISCELLANEOUS:

Leather laces for tack making. 1/16, 3/32, 1/8, 1/4 inch widths. Other Supplies available. Mini-Wax \$2.50/tub. Indian Brave Kit \$12.00; Native Arabian Halter Kit \$5.50; Inset Braid Western Bridle \$6.00; Add \$3/50 p & h to orders. (Orders receive free catalog) Also, custom and completed LSQ tack. Send \$2.00 (refundable) for the 1995 catalog to: **The Unicorn Woman, Melody Snow, PO Box 595, Lillian, Texas 76061-0595.**

CALLING ALL CHINA HEADS! We at the MIJC are putting together a reference book in hopes of cataloging & identifying as many china model horses Made in Japan as possible. If you would be interested in submitting photos, purchasing a book, or joining the club, please contact me. **Barri Mayse, 7300 Mayse Drive, Chapel Hill, NC 27514.**

Stolen at BreyerFest! Friday, July 28th early afternoon - the 1992 Jamboree Hartland raffle model #11/25. 11" White Quarter Horse with grey shadings and pink hooves. Numbered near inside of left hind leg. The green "claim ticket" documenting that it was #11 of 25 models made was draped over the back of horse and stolen also. Details have been reported to the KY mounted police. Any info leading to its return contact **Shirley Ketchuck, 519 Woodrow Avenue, Endicott, NY 13760-2275. (607) 754-8925. REWARD!**

Wanted: Decoraters, Woodgrains, any of the presentation series, the 1980's special run pigs, Reigseckers special run SM drafters, Elephant with Houdah, Flocked Legionario, Test Models. Please contact **Shirley Ketchuck, 519 Woodrow Avenue, Endicott, New York 13760-2275. (607) 754-8925.**

Learn how to remake & resin cast model horses with **Creating Champions**. 64 pages, 126 photos/illustrations, 14 color photos. 90 plus copies sold. \$16 ppd. Wanted: SM Foals, QH's, Saddlebreds 4RRH. **Sarah Tregay, 9505 Gold Coast Drive, #14, San Diego, California 92126.**

The Model Horse Gazette

ALL HALTER BENEFIT SHOW

All Proceeds to Benefit The Black Hills Wild Mustang Sanctuary
December 8, 9, & 10

GENDER

1. Stallions 4 and under
2. Stallions 5 and up
3. Mares 4 and under
4. Mares 5 and up
5. Open Geldings
6. Colts (under 2)
7. Fillies (under 2)
8. Showmanship Stallions
9. Showmanship Mares
10. Showmanship Foals

COLOR

11. Alabaster/White/Fleabit Grey
12. Dapple/Steel Grey
13. Black
14. Bay/Brown
15. Dun/Buckskin
16. Palomino
17. Chestnut/Sorrel

18. Roan
19. Paint
20. Appaloosa
21. Colors not listed

MAKES

22. OF Breyer
23. RR Breyer
24. OF Hartland
25. RR Hartland
26. OF Hagen Renaker
27. RR Hagen Renaker
28. OF North Light
29. RR North Light
30. Artist Resin
31. Original Sculptures
32. Makes not listed

BREEDS

33. Mustang

34. Arabian
35. Saddlebred
36. Tennessee Walking Horse
37. Andalusian/Lippizan
38. Other Spanish Breeds
39. Morgan
40. Quarter Horse
41. Appaloosa
42. Pinto
43. Thoroughbred
44. Other Sport Horse
45. Clydesdale
46. Percheron
47. Shire
48. Belgian
49. Other Draft Not Listed
50. Shetland Pony
51. Welsh Pony
52. Other Pony Not Listed
53. Mule/ Donkey/Long Ear
54. Any Other Breed Not Listed

Rules and Regulations

Halters only required in 8, 9, and 10

Class #54 does not include Pony Breeds, Draft Breeds, or Sport Breeds

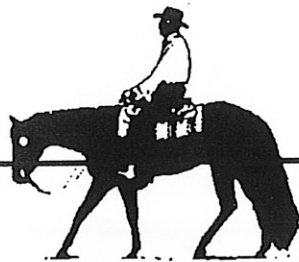
Please include ample postage for return of photos

The Model Horse Gazette will pay postage on prizes!

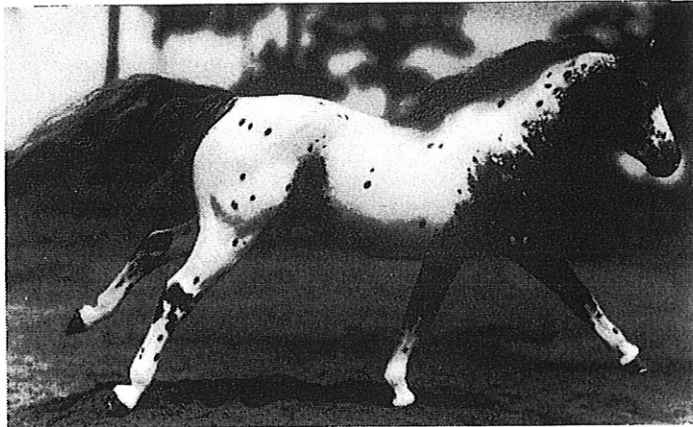
Entry Fee: \$1 per horse, or \$5 per stable

This Benefit Photo Show will begin an ongoing series of benefit shows to benefit the Black Hills Wild Horse Sanctuary. Each classlist will be the same, with a different judge for each show, and a year-end show each December (you get an extra show this first year!). The Grand Champion and winner of the Mustang Breed class will receive a Wild Horse Sponsorship kit, the Reserve Champion will receive a one issue extension to their subscription to *The Model Horse Gazette*. If you are interested in judging a show in the coming year, please contact us immediately. Judges for this year's shows will receive either a full page ad or full year subscription to *The Model Horse Gazette*. Look in the next issue for a photo of Cirrus, our sponsored mustang! Judge for the first show: Dawn Marie Calo, 7086 Ashlawn Drive, Brecksville, Ohio 44141.

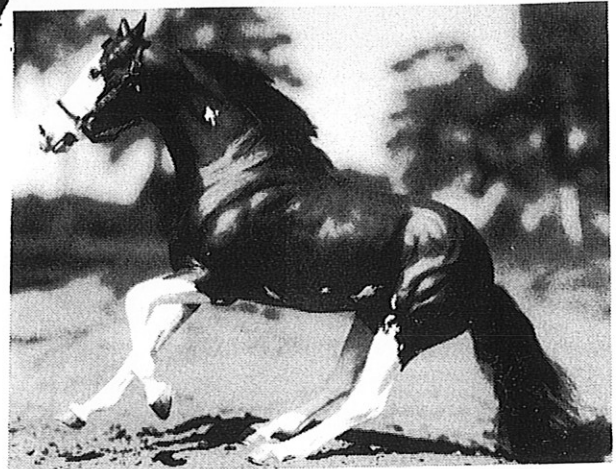
Lori Daniels/Equine Artist
3720 Friars Cove Road



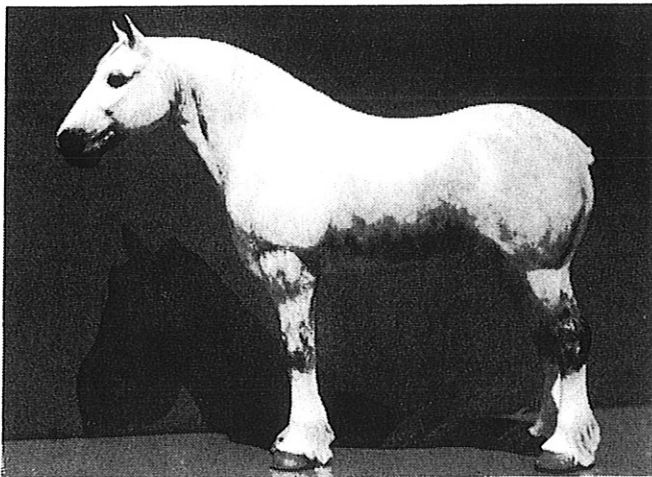
Crazyhorse Studios/Back of the Moon
St. Cloud, Florida 34722 (407)892-0535



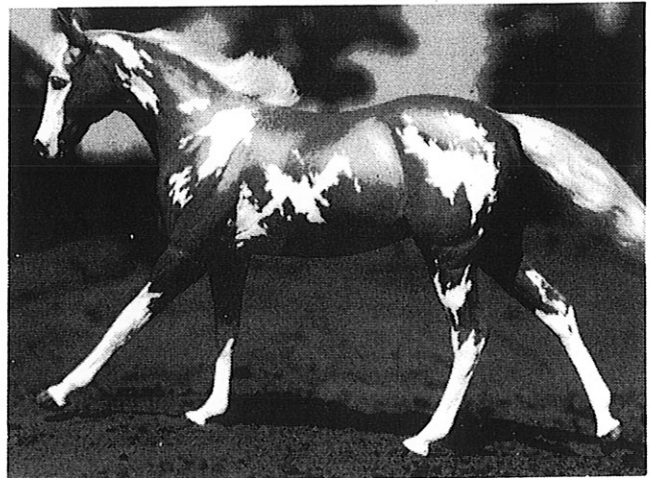
CZ Lightning Never Strikes
RRH Appaloosa Stallion



CZ Chex Maniac
RRH Paint Mare, Sliding Stop



CZ Blizzard
Classic-sized Percheron Gelding
1994 Limited Edition of 10, \$450



CZ Outlaw Persuasion
1993 Resin Cast Ed. #3 Paint Filly
Have one left, \$450 ppd.

SETTLE FOR NOTHING LESS

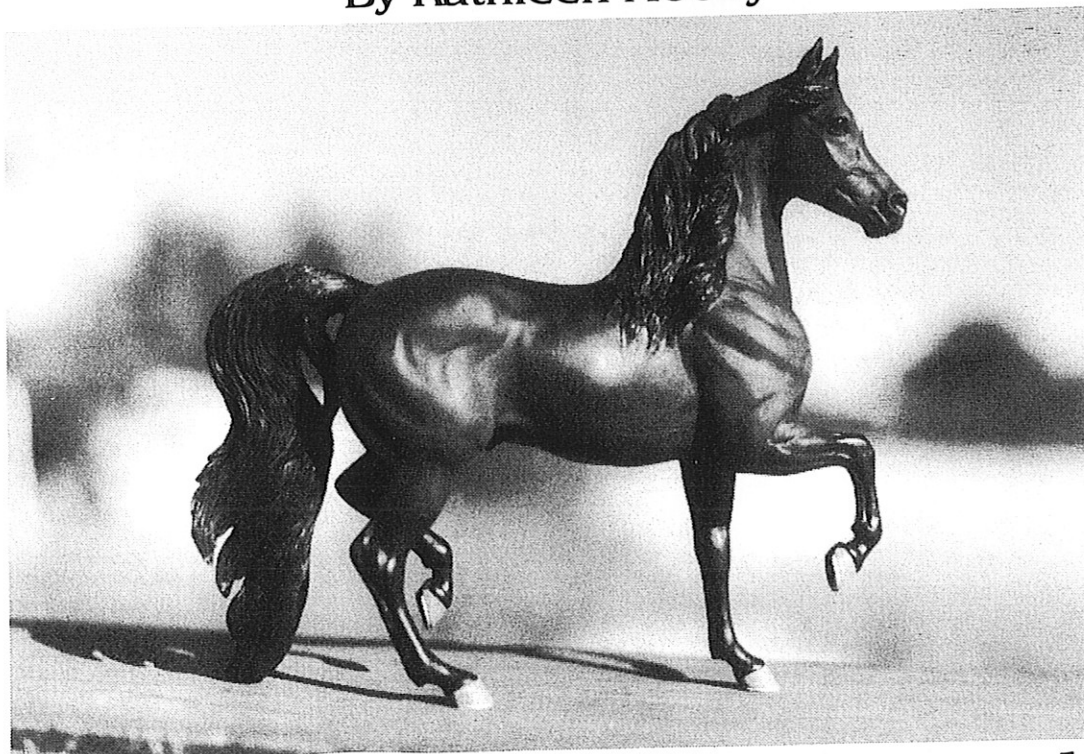
Crazyhorse Studios at Back of the Moon combines 30 years of artistic experience with our most favorite subject . . . the horse. Specializing in NO particular breed but with multi-champion results in all. Can YOU settle for anything less?? Time payments (up to a year) always accepted . . . SASE preferred, please.

DABAR
ENTERPRISES

Presents

"MAGNIFICENSE"

-The Rita Booth Morgan-
By Kathleen Moody



First in a Series of competition Masterworks

- Traditional-size Stallion
- Glass Eyes for Every Casting
- Tack Friendly - Lifted forelock, tail and flattened mane on withers allows for tack
- Free-standing - No base needed
- Ultra-detail - Every hair visible, veining, hoof bottoms (All 4), shoes, etc.
- High Quality - Lovingly hand-cast resin. Made in America by Americans.
- \$140 plus \$8 shipping/handling unfinished
- List of quality finishing artists available for the asking.
- Send a LSASE for our photo brochure of other show horses available.
- UPS Shipping (please no P.O. Boxes). Allow 6-8 weeks for delivery.

DABAR ENTERPRISES • P.O. Box 41588 • Mesa, Arizona • 85274-1588