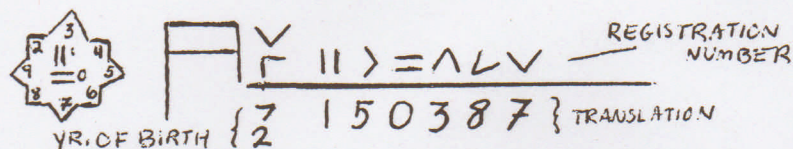


"bloody shoulder" marking. It is a splash of chestnut color on a grey horse, spreading down the shoulders and/or hindquarters making them appear to be stained red.

For the ultimate in realism, "freeze mark" your Arab! Freeze marking is a means of positive identification used by the Arabian Horse Registry of America, Inc. It is a series of right angles representing numbers and letters that is placed on the horse's neck midway between the poll and withers. Applied with extreme cold, this method is painless and permanent, and shows the year the horse was foaled, its registration number, and whether it is a pure or half-bred Arabian. Since the mark destroys the hair pigment, it appears white on all colors except grey, in which the hair is instead removed to reveal the black skin. Dr. Keith Farrow devised the system, which appears as this:

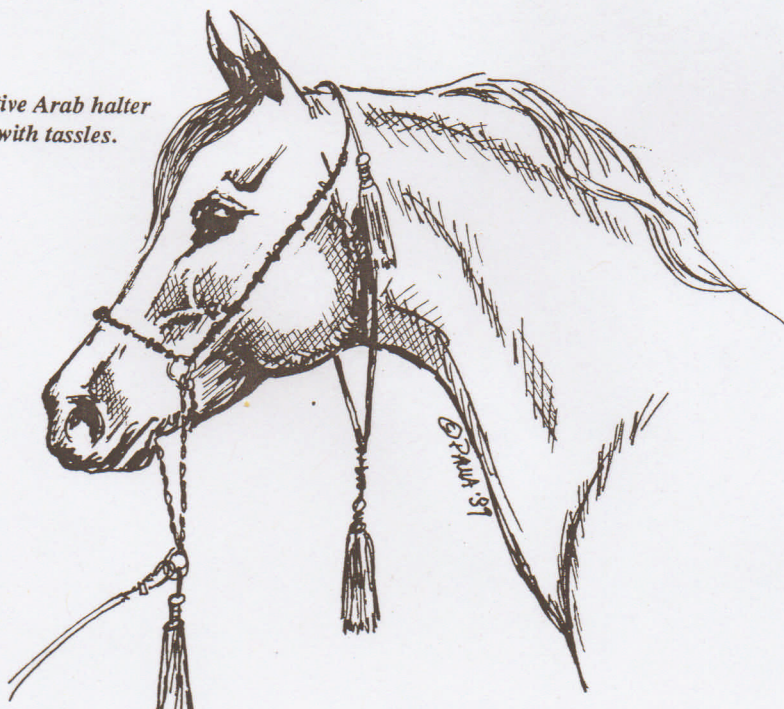


The upright "A" stands for a pure Arabian; an A on its side is for half-Arabians.

As with any other purebred in the show ring, the Arabian has specific tack requirements for each class. This article will concentrate on halter showing, as that is the most popular model Arabian class.

Because of their refined heads, Arabians wear show halters that are lighter and thinner than those for other breeds. The only requirements is that they have a throatlatch. Several styles are in use today. Perhaps the most popular and attractive is the plain leather halter with a half or full-circle noseband made of wire. It is extremely thin, almost like a string, and there is usually a metal oval on each side at the intersection of the browband and cheek piece. Another type features wide patent leather browbands and nosebands with bright trim. The macrame, corded "Native Arabian" halter with small tassels is popular among model showers (and hard to find/make—anyone out there selling?) but is not often seen on real Arabs. Finally, there is the leather halter with silver trim, which still remains in good company.

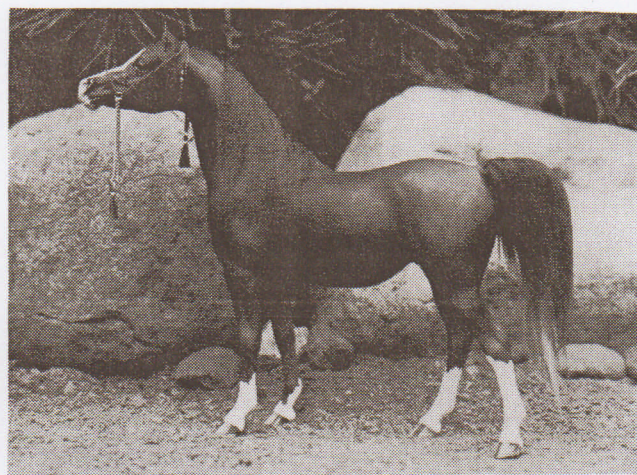
Native Arab halter with tassels.



Popular Arab halter known as a "thread"—chain throatlatch, very delicate-looking.



Light breeds show halter—brow and nosebands are often colored.



Kharcaza, mare by Sarah Minkiewicz shows a correct Arab halter pose.

The Arabian should also be shown in the correct halter pose. Viewed from the side, the forelegs are evenly placed perpendicular to the ground. The hind leg on the viewer's side is stretched back behind the other hind leg. The neck is usually extended, arched, and the head is held high. Some people find this head set forced, and that it detracts from the Arabian's natural lines. However, it is how Arabians are indeed shown, and apparently handlers believe it is the best way to flatter the horse's form. Most standing model Arabs are seen in a somewhat relaxed form of this position, with the head flexed downwards.

As one can see, there are many ways to achieve realism with a model Arabian. Keep the above information in mind when you are showing your Arabian and you want to be a step ahead of everyone else. The right description, halter, and stance could pull your model over the top! Good luck, and above all, have FUN!